



## Alabama Traffic Detoured Via Acrow Bridges During Highway Construction

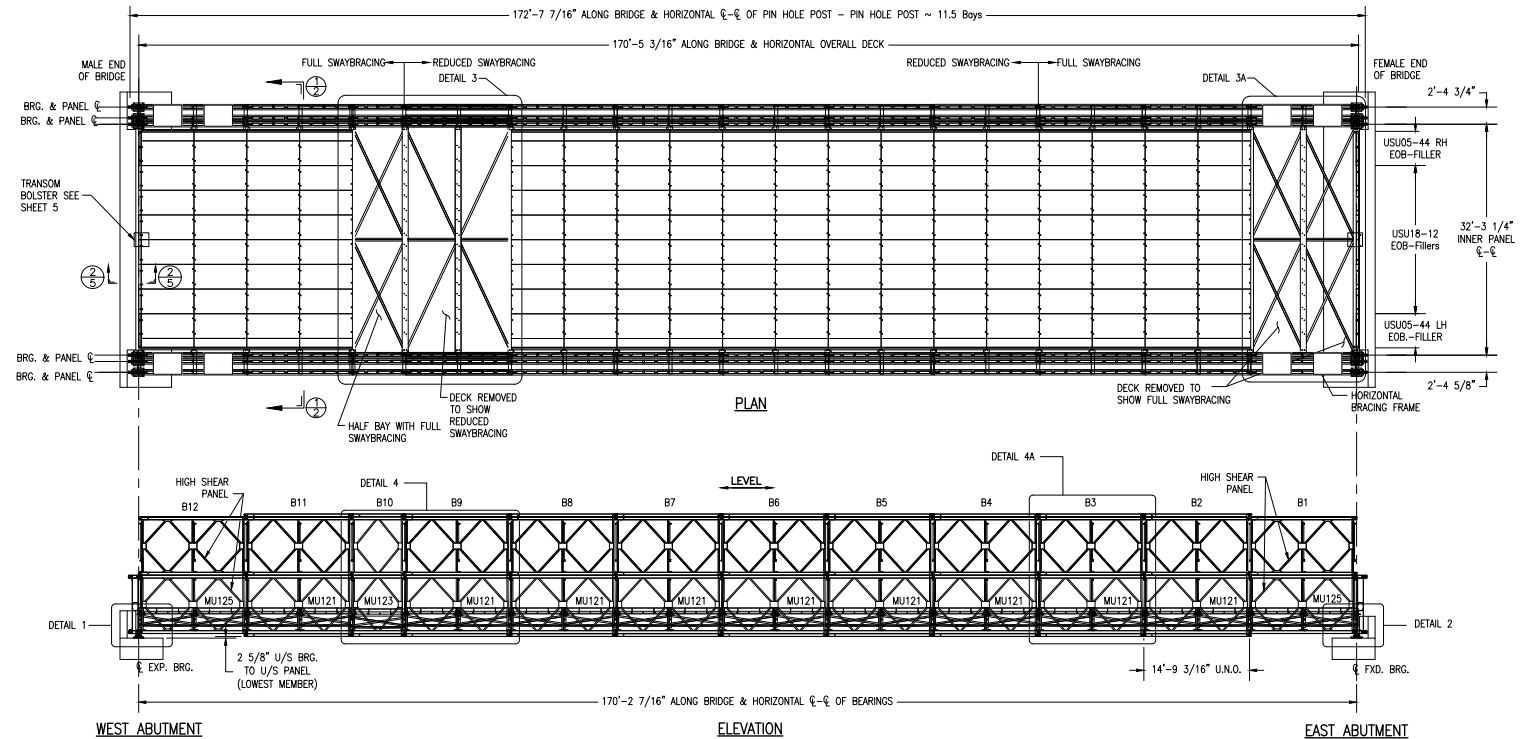
Two steel modular structures provide a safe, cost-effective alternative to phased construction in Centreville

When it was time for the Alabama Department of Transportation to replace two aging bridges on State Route 5 in the small city of Centreville, minimizing the impacts of construction on the highway was a major consideration. The highway is used by local commuters, first responders and a sizable number of commercial farming vehicles, so without a reasonable detour route available, installing detour bridges was considered essential to the success of the lengthy project.

The Bridge Builders of Alabama LLC, appointed project contractor by the Alabama Department of Transportation, rented modular steel Mabey Universal™ panel bridges from Acrow. Each bridge is a single span 169.74 feet (51.74m) long, with a two-lane width of 30 feet (9.15m). They are designed to AASHTO's live load rating ASD HS20, and the plain steel decks are overlaid with an average of 4-5" of asphalt to create a 2% crown.

The bridges were installed over Blue Girth Creek and Blue Girth Reserve. Each was launched slightly downhill to accommodate the site topography. This proved challenging, with both bridges weighing 286 tons, however, Acrow's on-site technician and the considerable expertise of the contractor permitted safe installation of each structure ahead of schedule.

Acrow's durable, cost-effective bridging solutions are an excellent choice to consider over phased construction during infrastructure rehabilitation projects. Quickly and easily built and installed, they are available for rent or purchase, and increase work zone safety while reducing work zone user impacts.



## Specifications

### Bridge length:

Two bridges of 169.74' (51.74m)

### Roadway width:

Each 30' (9.15m)

### Guide rails:

TL-4

### Deck surface:

Asphalt overlay

### Bridge erection method:

Bridge 1: Crane-assisted launch  
Bridge 2: Full cantilever launch

### Design load:

HS20-44

### Standard Acrow bridge finish:

- All major components galvanized to AASHTO M111-ASTM A123
- All bolts are hot-dip galvanized
- All pins are electrogalvanized

### Standard Acrow bridge specification:

- (A) Panel chords, diagonals, verticals, reinforcing chords, rakers to AASHTO M223 GD 65
- (B) Raker braces, transoms, top chord braces, swaybraces, transom braces, diagonal chord braces, decking to AASHTO M223 GD 50
- (C) Panel pins to ASTM A 193 GD B7
- (D) Bolts to AASHTO M164M - A325